



## Stainless Steel Vacuum Drying Oven For Power Transformer Electric Insulators Square Jar

Our Product Introduction

for more products please visit us on [jc-transformer.com](http://jc-transformer.com)

### Basic Information

- Place of Origin: China
- Brand Name: JC
- Certification: SGS CE,UL
- Model Number: KCY-3500-000
- Minimum Order Quantity: 1 pcs
- Price: consult
- Packaging Details: Export standard packaging
- Delivery Time: 5 days
- Payment Terms: L/C, T/T, Western Union, MoneyGram
- Supply Ability: 100pcs/month



### Product Specification

- Name: Vacuum Pressure Casting Equipment
- Process: Casting
- Specification: Pressure Increasing
- Capacity: Customized
- Design Pressure: Customized
- Design Temperature: Customized
- Heating Method: Direct/Indirect
- Heating Source: Steam/Electricity/Gas/Oil
- Material: Stainless Steel
- Operating Pressure: Customized
- Product Name: Pressure Increasing Drying Plant
- Surface Treatment: Painting/Sand Blasting
- Vessel Type: Vertical/Horizontal
- Vessel Volume: Customized
- After-sale Service: Engineers Available To Service Overseas



### More Images



## Product Description

vacuum drying oven for power transformer with Transformer Oven for Electric Insulators(Square jar)

### EQUIPMENT COMPOSITION

NO.	NAME	QUANTITY	REMARK
1.1	200L VACUUM FINAL MIXING GAS TANK SYSTEM	TWO SETS	
1.2	VACUUM POURING TANK SYSTEM	ONE SET	
1.3	HEATING SYSTEM	TWO SETS	
1.4	VACUUM SYSTEM	TWO SETS	
1.5	COOLING WATER PIPING SYSTEM	ONE SET	
1.6	PNEUMATIC AND PIPING SYSTEMS	ONE SET	
1.7	CONTROL SYSTEM	ONE SET	TOUCH SCREEN
1.8	STEEL FRAME PLATFORM	ONE SET	OFFERED BY PART A

### TECHNICAL INDICATORS AND PARAMETERS OF EQUIPMENT:

Vacuum pouring pot size  $\Phi 2000 \times L2400$

The pumping speed of the main pumping pump of the vacuum system is 300L/S

Working temperature of pouring tank is 70 ~ 85

Ultimate vacuum degree of pouring tank (cold state, no load)  $\leq 50\text{Pa}$

Pouring tank leakage rate  $\leq 50\text{Pa} \cdot \text{L/S}$

The working vacuum of pouring tank is 50 ~ 100Pa

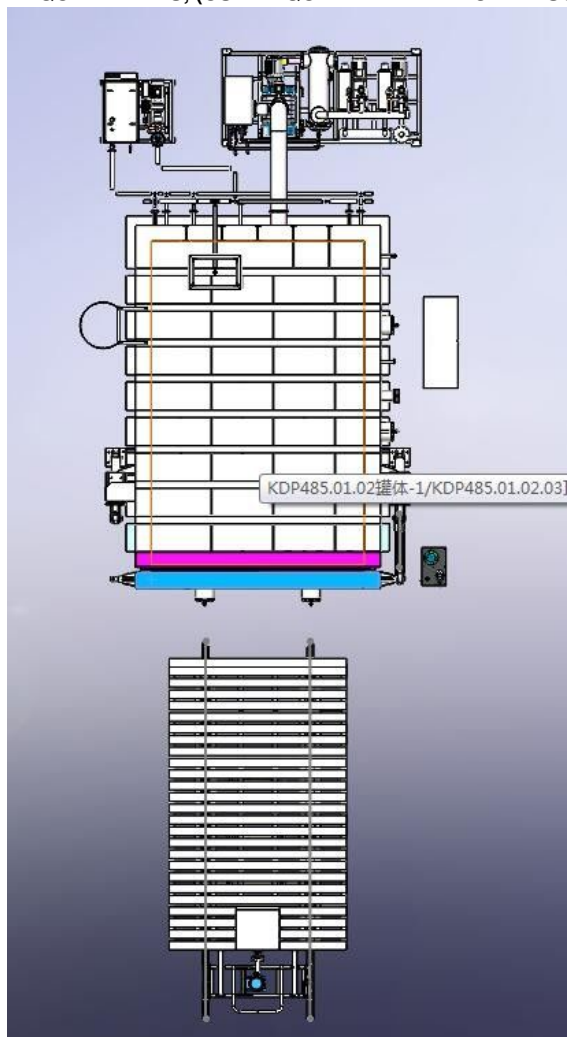
The equipment adopts manual metering and dynamic mixing of materials.

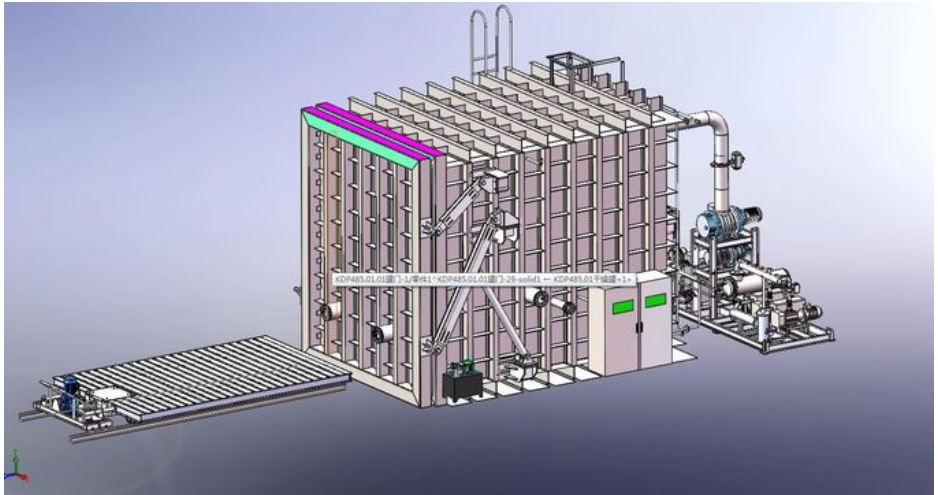
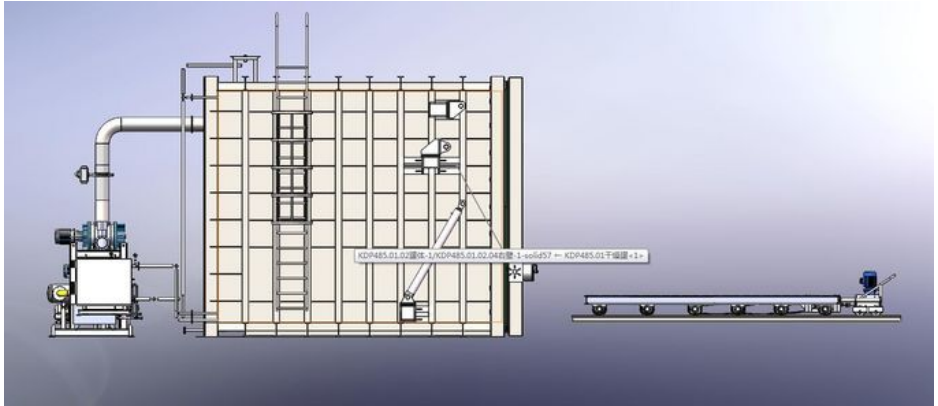
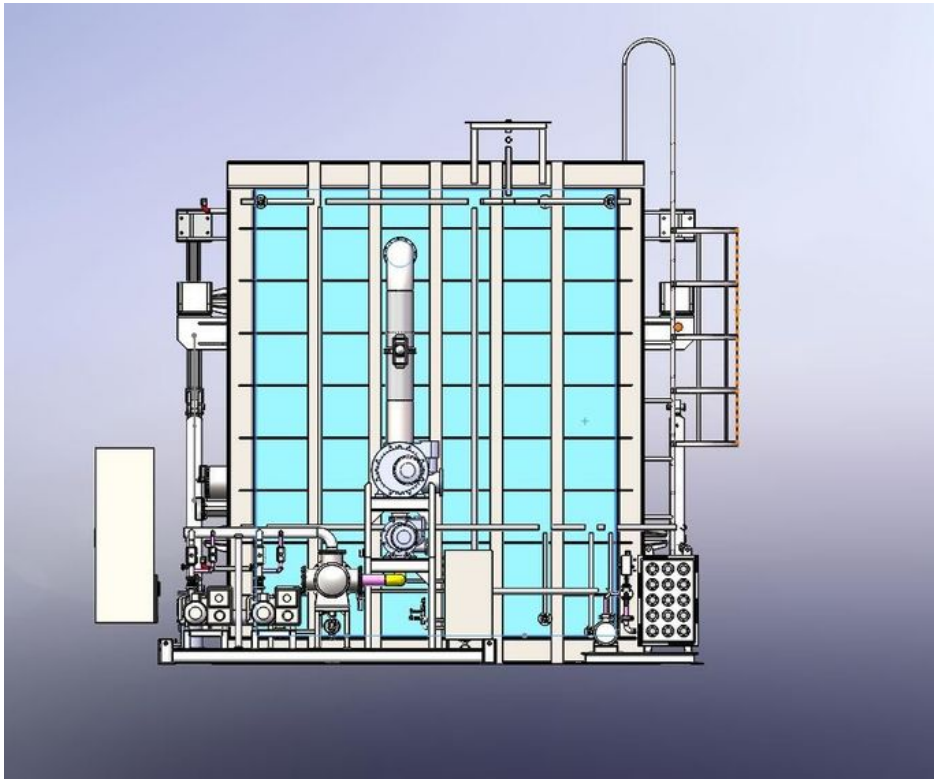
The equipment adopts vacuum casting process.

The mixing tank adopts electric heating, heat conduction oil as heat transfer medium and automatic temperature control. The pouring tank is directly heated by electric heating element. All heating parts are insulated with thermal insulation materials, and the pouring tank is armored with stainless steel plate (SUS430); The mixing tank is armored with thin steel plate and coated on the surface. The surface temperature of the insulation layer is not higher than 20 room temperature.

### EQUIPMENT POWER, WATER, AIR SOURCE AND BASIC CONDITION

REQUIREMENTS, (USER EQUIPPED WITH: POWER SUPPLY, AIR COMPRESSOR):











Rated power: 80kw, 380V, 50Hz, three-phase five-wire special distribution cabinet, power connected to the electric control cabinet.

Water source: pressure  $\geq 0.2\text{Mpa}$ , maximum consumption 3m<sup>3</sup>/h, water temperature  $\leq 25$  .

Compressed air: 0.4 ~ 0.6Mpa, maximum consumption of 0.3m<sup>3</sup>/min

Make foundation, steel frame and outer track of embedded tank according to our design drawings.

#### **TECHNICAL CONDITIONS OF EACH SYSTEM**

##### **A SET OF 400L VACUUM MIXING DEGASSING TANK**

Technical specification and application of tank

The effective volume is 400L

Heat conduction oil 10KW

Ultimate vacuum: 50Pa (no load, cold state)

No load leakage rate: 50Pa.L/S

Operating temperature: 60 ~ 80

Tank surface temperature Ambient temperature +20

Equipped with frequency control device, can adjust the stirring lifting speed according to the viscosity of the material;

Rock wool insulation, stainless steel plate (SUS430, 1.5mm thick) armored, surface coating

This tank is used for mixing epoxy resin and curing agent mixture and vacuum degassing.

The mixing tank is installed on the pouring master side of the vacuum pouring tank to increase production.

#### **4.4 TWO SETS OF VACUUM SYSTEM (A TOTAL OF 3 VACUUM PUMPS):**

4.4.1. The maximum pumping speed of a rotary sheet Roots unit to the pouring tank vacuum unit is 300L/S. The working vacuum of the system can be controlled between 50-200Pa; Reduce the possibility of material being pumped into the vacuum system due to high vacuum degree; The system is equipped with 2 sets of special filters to prevent impurities in the pumped gas to the maximum extent and capture condensing condensable gas to protect the vacuum pump.







400L MIXING TANK:





**Wuxi Jiachen Power Electronics Equipment Co., Ltd.**



[tangliang@jc-cores.com](mailto:tangliang@jc-cores.com)



[jc-transformer.com](http://jc-transformer.com)

No. 68, Zhounan Road, Wanshi Town, Yixing City, Jiangsu Province, China