

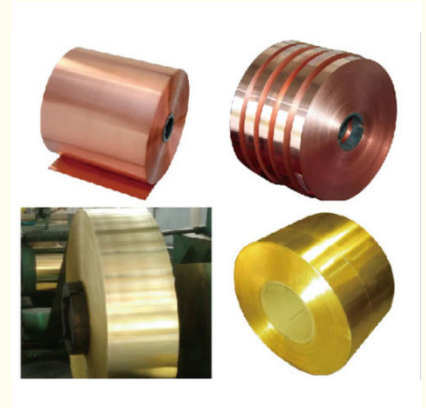


JIS C1100 C1050 Transformer Copper Foil For Dry Or Oil Type Transformers Winding

Our Product Introduction

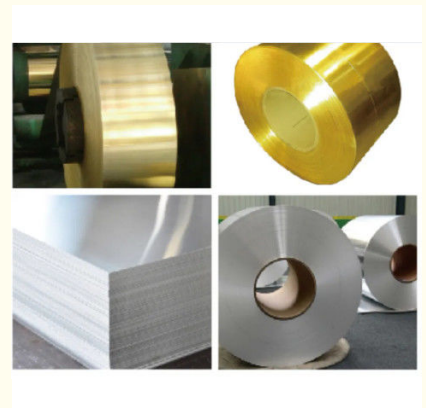
Basic Information

- Place of Origin: China
- Brand Name: JC
- Certification: SGS CE,UL
- Model Number: JC998
- Minimum Order Quantity: 1 pcs
- Price: consult
- Packaging Details: Export standard packaging
- Delivery Time: 3 days
- Payment Terms: L/C, D/P, T/T, Western Union, MoneyGram, D/A
- Supply Ability: 500mt/Month

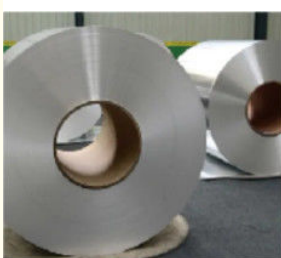


Product Specification

- Color: Red
- Application: Transportation Tools, Door & Window, Glass Wall, Heat Sink, Decorations, Transformer
- Certification: ISO9001, ASTM, JIS, GB, EN
- Technique: Cold Drawn
- Grade: 1000 Series
- Surface Treatment: Electroplating, Reflow Plating, Hot-DIP Plating
- Highlight: **Transformer Copper Foil, copper foil winding, copper foil for transformer winding**



More Images



Product Description

JIS C1100 C1050 Copper Foil for Dry type or Oil type transformers

Basic Info.

Model NO.	C1100
Transport Package	Standard Export Package for Ocean Transportation

Alloy	Alloy
Specification	as required

CHEMICAL COMPOSITION

HS Code	740919000
---------	-----------

Origin		China	HS Code
Production Capacity		5000mt/Month	
Alloy		Chemical Composition(%)	Conductivity(IACS)
JIS	GB	Cu+Ag	
C1100	T2	99.90%	96%
C1020	TU2	99.96%	100%
Features and Use	High purity, good conductive,thermal conductivity, processability, welding performance, and good corrosion resistance.Used for heat dissipation device and electric conduction devices.etc.		

PHYSICS PROPERTIES

JIS	TEMPER	GB	Tensile Strength(N/m ²)	Elongation(%)	Hardness(HV)
C1100	O	T2	>=195	>=35	/
	H/4	T2	215-275	>=25	55-100
	H/2	T2	245-315	>=15	75-120
	H	T2	>=275	/	>=80
C1020	O	TU2	>=195	>=35	/
	H/4	TU2	215-275	>=25	55-100
	H/2	TU2	245-315	>=15	75-120
	H	TU2	>=275	/	>=80

Remarks:confirmed, can provide surface electroplating, reflow plating, hot-dip plating materials.

Product Description

PRODUCT SHOW

JIS C1100/C1050 Copper Foil

Company advantage

Quality is guaranteed. Since its establishment, JIACHEN is committed to providing high quality products and efficient service and has been adhering to the road of high-tech development.

Technology equipment is advanced. Our partners have high-precision, high-efficiency modern professional production equipment: import slitting machine(1600mm), precision slitting machine (450mm), precision slitting machine(650mm), imports of horizontal shears(flying shear 850mm) Shears(shear cut 650mm), the overall production equipment in the same industry-leading level.

Service is trustworthy. We have been a high-quality supplier of made-in-china network, has been committed to foreign trade, foreign trade capacity has been audited by made-in-china network. We sincerely and warmly welcome you to visit and give advice to improve our shortcomings, learn new technologies, improve product performance, and mutual benefit.

CONTACT US

Fax:86 - 510 - 83792053
Tel: 86 - 510 - 83792053
Mob:86- 3415389151



Wuxi Jiachen Power Electronics Equipment Co., Ltd.



tangliang@jc-cores.com



jc-transformer.com

No. 68, Zhounan Road, Wanshi Town, Yixing City, Jiangsu Province, China